



MobileMark
antenna solutions



Land Mobile Radio Antenna Solutions
VHF, UHF, PTC 220 and Low Band

Land Mobile Radio continues to be an important option for many commercial and governmental wireless users. These terrestrially-based wireless communications systems are used by Emergency Responders, Public Works, Construction, Utilities, and the Military to dispatch vehicle fleets or stay connected to mobile personnel.

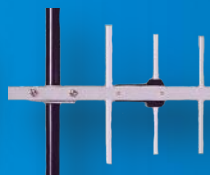
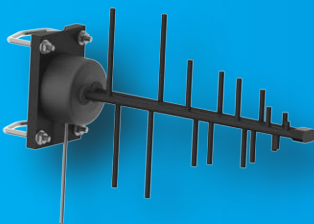
Mobile Mark and Comtelco brand antennas cover the full range of LMR frequencies including 25-174 MHz, 220-512 MHz, 700 MHz and 800 MHz. We recognize that mounting and coverage expectations change from one setting to another and offer a wide variety of antenna styles to accommodate these differences.

Whether the radio equipment you are using includes Hand Portable Radios, In-Vehicle Radios, or fixed-location Base Station Radios, we offer innovative high-quality antennas to improve your connectivity.

MobileMark

antenna solutions

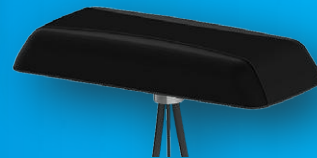
Omni-directional Base Station Antennas
LMR base station options include both omni-directional and directional antenna solutions. Mobile Mark's Comtelco brand omni-directional antennas offer three levels of construction: 1", 1 1/2" and 2" diameter radomes, allowing the network designer to choose the level of resilience required for the installation. The Folded Dipole Antennas, which can be configured for either omni-directional or directional use, provide wider bandwidth coverage than other forms of dipole antennas.



Whip-style Mobile Antennas
A wide range of traditional whip-style mobile antennas are available in the Comtelco brand line. These antennas are configured for a specific frequency range within UHF, VHF, 220 and Low Band and are typically tuned at the factory. Some models are field tunable and a cutting chart is included. Most of the antennas in this line have an NMO base; Mag-mount bases are available and are typically configured with 17-feet of cable.



Broadband & Multi-band Mobile Antennas
While many Land Mobile Radio (LMR) users know exactly which frequencies they will use, others appreciate the flexibility of the broadband mobile antennas. Solutions are available for UHF, VHF, Cellular/FirstNet and WiFi allowing them to be easily stocked for a wide range of radios. Multiband Antennas are a convenient solution that combine UHF with Cellular/FirstNet and GPS coverage within the same antenna housing.



COMTELCO

Comtelco, a Mobile Mark brand



Point-to-Point & In-Building Antennas
For point-to-point wireless connections, Yagi antennas offer rugged and reliable solutions. The Comtelco brand Yagis are made with a construction technique called cold weld, which produces antennas every bit as rugged as a welded Yagi, but at a significant cost advantage. UHF In-Building coverage is becoming a more common requirement so that Public Safety professionals can stay connected when they enter a building. Mobile Mark's new Ceiling Mount UHF antenna offers consistent coverage and a small, discreet, profile.



Low-profile Mobile Antennas
Low profile antennas have become increasingly popular among LMR professionals as users move away from whip style antennas on their vehicles. We offer solutions for UHF, VHF and Cellular/FirstNet. Mount options range from standard NMO mount, to tamper proof thru-hole mounting, to mobile mag-mount. The new Low-Profile VHF antenna represents a significant step forward for emergency vehicles who require a low-profile solution but still need a reliable VHF connection.



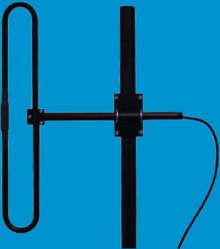
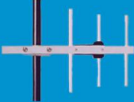
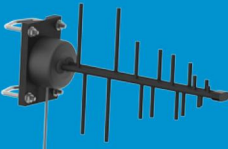












Mobile Mark and Comtelco brand antennas cover commercially available wireless networks as well as specialized networks. We can help you tie together the right mix of wireless systems for both vehicles and infrastructure. And, installers love the fact our antennas are easy to install and service free.

If you need something special, Mobile Mark has the facilities and the experience to take a project from initial conception through to final production. Our team of design engineers brings years of experience and a proven track record for developing innovative, high quality antennas.

www.MobileMark.com for our full product line.



OMNI-DIRECTIONAL BASE STATION ANTENNAS	POINT-TO-POINT & IN-BUILDING ANTENNAS	WHIP-STYLE MOBILE ANTENNAS	LOW-PROFILE MOBILE ANTENNAS	BROADBAND & MULTI-BAND MOBILE ANTENNAS
 <p>BS150XL3-B Omni, VHF 150-156 MHz, 3 dBd gain</p>  <p>BS450XL4.5-C Omni, UHF 450-470 MHz, 4.5 dBd gain</p>  <p>EDX150 Folded Dipole, 150-174 MHz, 2.5 dBd gain</p>	 <p>Y3343D-C Heavy Duty Yagi, UHF 450-470 MHz, 7 dBd gain</p>  <p>Y42700WB Wide-Band Yagi, 698-6000 MHz, 8 dBd gain</p>  <p>CLTM101 In-Building, Ceiling Mount 420-470 Mhz</p>	 <p>A1801AS, Base Loaded Shock Spring, 37-51 MHz, Unity gain</p>  <p>A1510WTB Wide Tri-Band Mobile, 140-170/450-490/ 730-800 MHz, Unity-3 dB gain</p>  <p>A55136TBS Tri-Band 136-174/380-490/ 698-870 MHz, 3 dB gain</p>	 <p>MXF-450, MaxFin Aerodynamic Styling 440-470 MHz</p>  <p>Low Profile VHF Only 3.25" elevation (8.25cm) from vehicle roof</p>  <p>A158192B, 800-1900 MHz, 2 dB gain</p>	 <p>A1511B Quarter Wave-Shock Spring Whip, 132-970 MHz, Unity gain</p>  <p>LLPG304, Low Profile 3-Cable: 1xUHF, 1xGNSS & 1xFirstNet/LTE</p>  <p>TMA-WB1 Super Wide-Band 420-6000 MHz</p>